



OFFICE SPACE AND MEETING ROOM - TO LET

RADFORD HOUSE, STAFFORD PARK 7, TELFORD, SHROPSHIRE, TF3 3BQ

///dame.romantics.ties

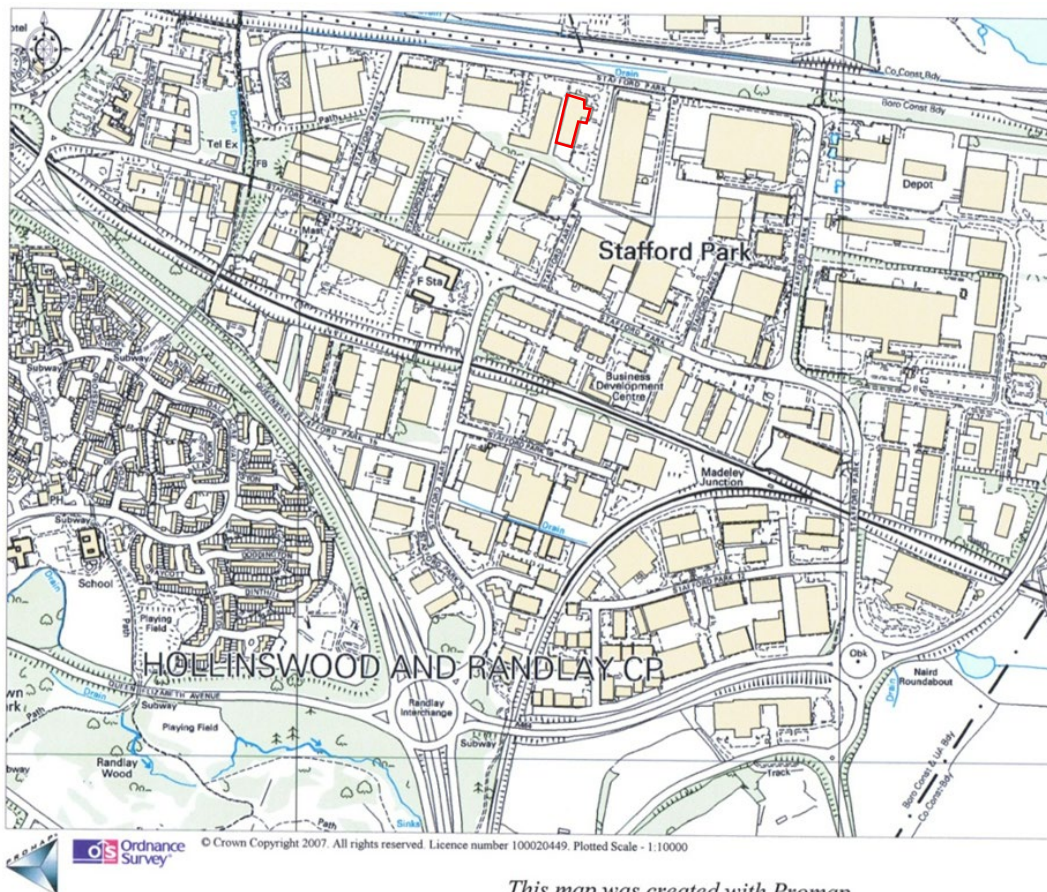
Radford House comprises an efficient, “no fuss” self-contained two storey office building on a private site. The property overlooks the M54 motorway in an established, easily accessible business park known as Stafford Park in Telford, Shropshire. Each floor has w/c and kitchen facilities.

Suites range from single person suites to interconnected larger opportunities. The office premises benefit from inclusive, flexible terms, ample allocated and shared parking and fibre broadband. Current availability is shown below.

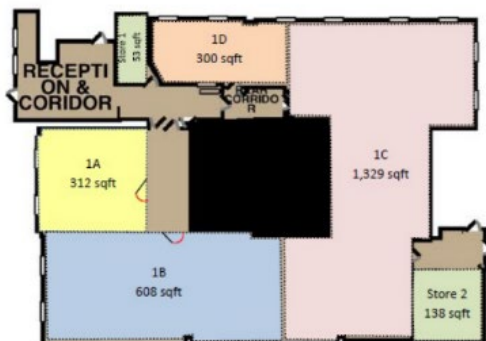
For further information or to arrange to visit, please contact Anthony Wiggins on 01952 603303 or Erin Beards on 07534 687232.

Subject to Contract / Details updated 02/26 / EPC E-108

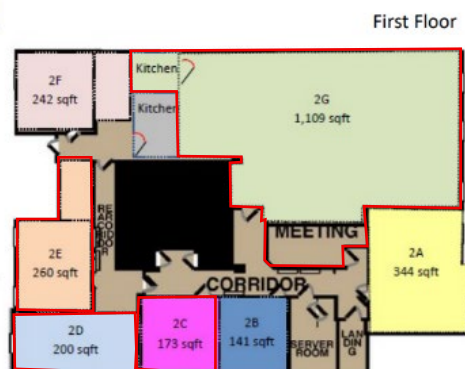
| Current Availability: | | | | | |
|-------------------------|--------------|-------------|--------------------------|----------------------------------|--------------|
| Suite | Size (sq.ft) | Size (sq.m) | All Inclusive Rent (pcm) | Allocated Parking (No of spaces) | Availability |
| Suite 2g & Meeting Room | 1,272 | 118.17 | £2,083.33 | 9 | AVAILABLE |
| Suite 2c | 173 | 16.7 | £360.42 | 2 | AVAILABLE |
| Suite 2d | 200 | 18.58 | £416.67 | 2 | AVAILABLE |



This map was created with Promap



Ground Floor



First Floor

Indicative Plans Only
DO NOT SCALE

IMPORTANT NOTICE

Wiggins Lockett Thompson Ltd. for themselves and for the vendors or lessors of this property whose agents they are give notice that:

(i) the particulars are set out as a general outline only for the guidance of intending purchasers or lessees and do not constitute nor constitute part of an offer or contract. (ii) all descriptions, dimensions, references to condition and necessary permissions for use and occupation and other details are given in good faith and are believed to be correct but any intending purchasers or tenants should not rely on them as statements or representations of fact but must satisfy themselves by inspection or otherwise as to the correctness of each of them. (iii) no person in the employment of Wiggins Lockett Thompson Ltd. has any authority to make or give any representation or warranty whatever in relation to this property. (iv) all rentals and prices are quoted exclusive of VAT. (v) the reference to any plant, machinery, equipment, fixtures and fittings at the property shall not constitute a representation (unless otherwise stated) as to its state and condition or that it is capable of fulfilling its intended function. Prospective purchasers/tenants should satisfy themselves as to the fitness of such items for their requirements. (vi) Any movable contents, fixtures and fittings referred to in these particulars (including any shown in photographs) are excluded from the sale/letting, unless stated otherwise.