



Business Premises To Let

Units ranging in size from 148 sq ft to 2,267 sq ft



01788 551500



sfwbc@warwickshire.gov.uk

Sir Frank Whittle Business Centre

Great Central Way

Rugby

Warwickshire

CV21 3XH



Sir Frank Whittle Meeting Room

Warwickshire County Council's Business Centres are purpose-built to support the growth of small and medium-sized enterprises (SMEs) across the county.

Strategically located throughout Warwickshire, we offer flexible, high-quality office and industrial space designed to meet the evolving needs of local businesses, from first-time office users to expanding enterprises.

By choosing a Warwickshire Business Centre, you're not just renting space, you're joining a thriving, supportive business community backed by a council committed to your success.

What sets us apart



Council-backed confidence:
As a publicly owned initiative, our centres reinvest in the local economy, offering stability, transparency, and a commitment to community growth.



Tailored for SMEs: Whether you're moving from a home office or scaling up, our spaces adapt to your journey.



Flexible terms: Easy-in, easy-out 28-day break clauses with no hidden costs.



Majority of units fall under the threshold for rates relief meaning zero rates payable.*



Modern facilities: From offices to light industrial spaces, meeting rooms, and 24/7 access.



Supportive ecosystem: Our teams understand local business needs and connect you to Warwickshire's wider business support network, including the Skills Hub and Business Growth Warwickshire programmes.



Community-driven: Communal spaces and events foster collaboration, wellbeing, and networking.

***We advise all parties to seek advice from the relevant local authority.**



Reception Services & Amenities



Reception services
Monday - Friday



Out of hours
CCTV monitoring



24/7 Fob Access



Free onsite
car parking



Phone and
internet included



Bookable
meeting room



Single and three
phase electricity



Communal loading
bay facilities



Franking &
photocopying



Daily courier drop
off & collection

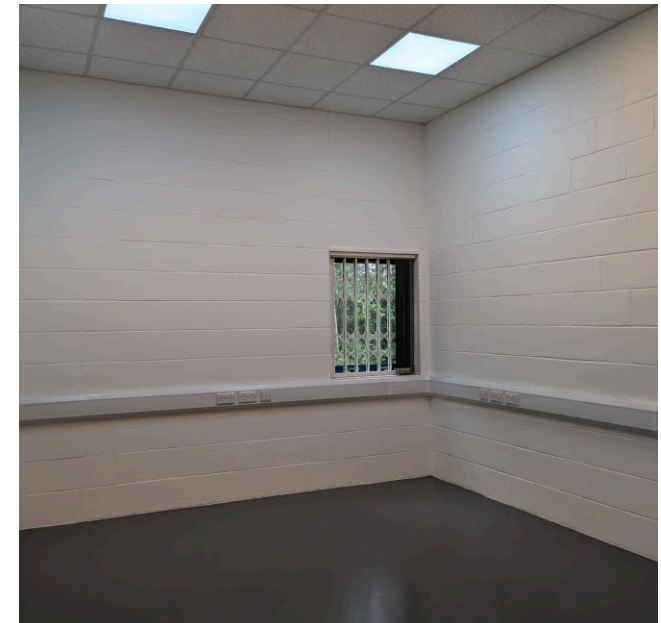
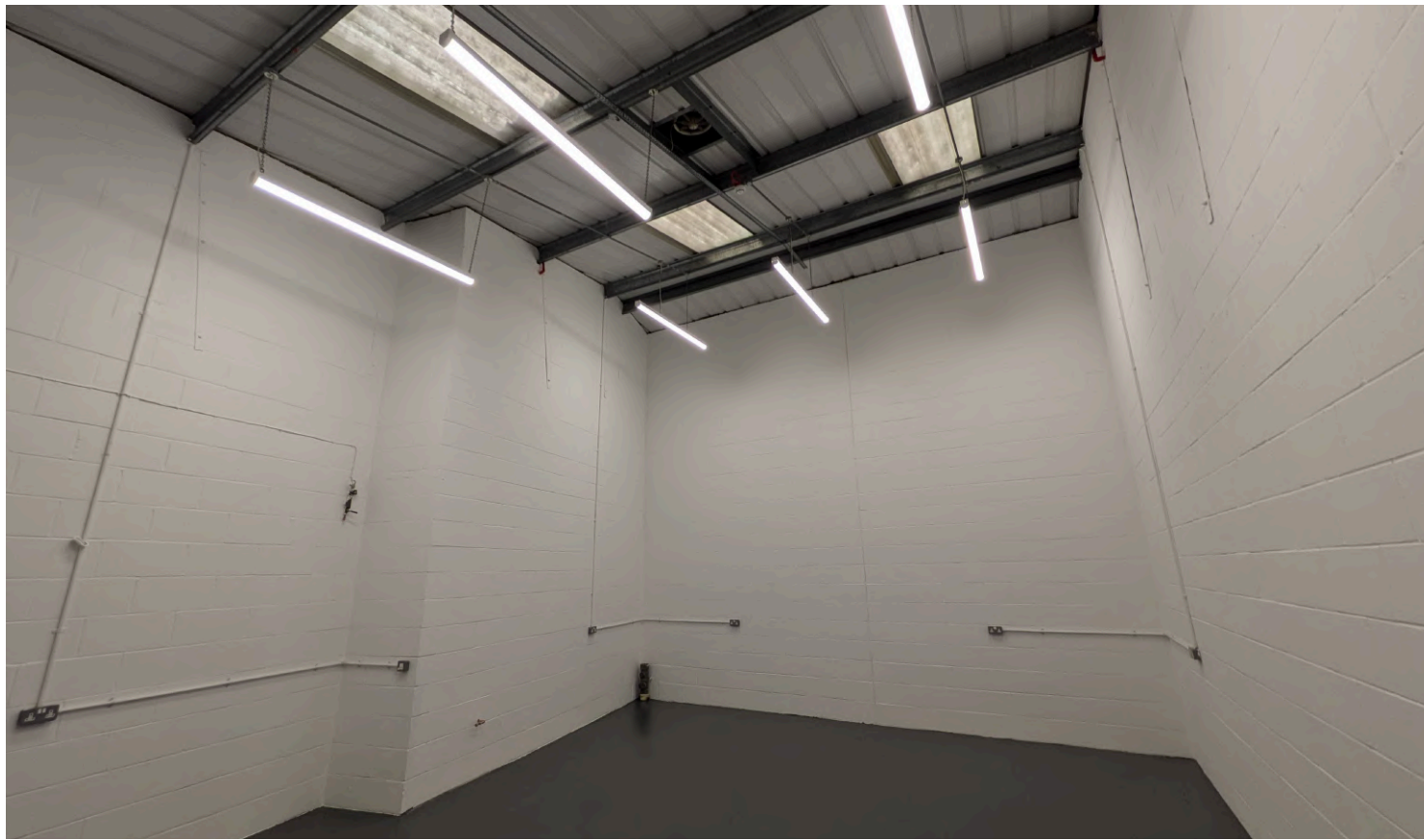


Communal
kitchen facilities



Shower & toilet
facilities







Location & Transport

Sir Frank Whittle Business Centre is located near to Rugby Town Centre, with great transport links to the M6 and M1. Only 15-minute walk from Rugby train station, with direct services to London Euston in 50 minutes and Birmingham in 30 minutes.



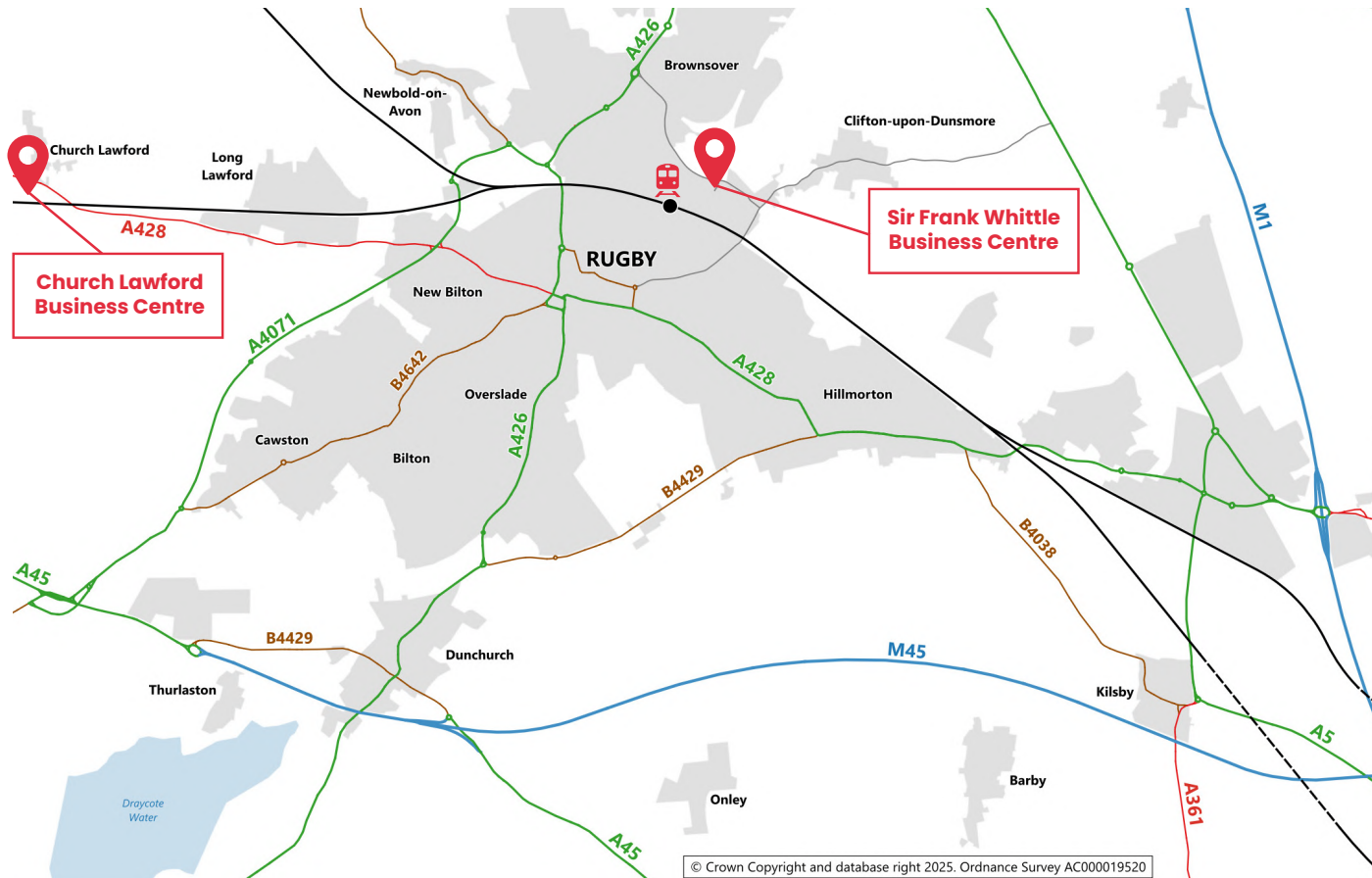
Free Parking
On Site



Rugby Train Station
15 minute walk



Easily reached from
the M1, M6 and M45



Contact Us



01788 551500



sfwbc@warwickshire.gov.uk

Sir Frank Whittle Business Centre

Great Central Way
Rugby
Warwickshire
CV21 3XH

Our Other Business Centres

Smallbrook Business Centre Bidford On Avon
Church Lawford Business Centre Rugby
Holly Walk House, Leamington

01788 551500
sfwbc@warwickshire.gov.uk

Eliot Park Innovation Centre Nuneaton
Bermuda Innovation Centre Nuneaton

02476 796400
eliotpark@warwickshire.gov.uk

Centenary Business Centre Nuneaton
Hammond Business Centre Nuneaton
Pool Road Business Centre Nuneaton

02476 641399
cbc@warwickshire.gov.uk

Misrepresentation Act: Whilst the statements contained in these particulars are given in good faith and as a general guide to the property they do not form any part of an offer or contract. Neither the lessor, or any person in the employment of Warwickshire County Council has any authority to make or give any representation or warranty whatsoever in relation to this property. Interested parties must satisfy themselves by inspection or otherwise as to the correctness of these particulars.