



EXCLUSIVE RURAL OFFICE SPACE

Area:	1700 sq ft (160m ²)
Rent:	£19,500 pa
Service Charges:	7.5% of rental plus VAT
Business Rates:	TBA

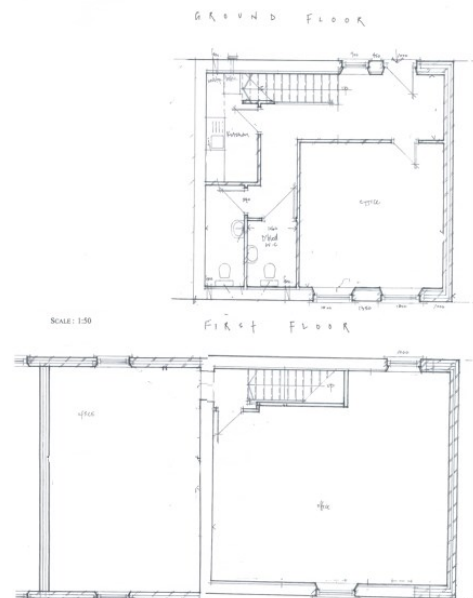
THE PROPERTY:

Carefully converted in the year 2000 from traditional farm buildings and recently renovated in December 2024, this office is one of 10 at the Menagerie and provides an exclusive space in which to create your working environment. Set in a peaceful and tranquil area with easy access from the A19, which is only a 2 minute drive away. The A64/A19 intersection is also only a 5 mile drive north on the A19, keeping well clear of the traffic chaos during peak rush hours.

The Menagerie also provides ample private free parking for your staff and visitors directly outside the building.

FACILITIES

- Wireless or BT Broadband available.
- Oil central heating.
- Royal Mail Collection Service.
- Free private parking + visitor parking.
- Nature Trails.
- Quiet Seating Areas.
- Open Views.
- Landscaped & fully maintained grounds.
- Private course fishing.



CONTACT
GREG ASHCROFT
TO ARRANGE A VIEWING
01904 728252 GA@ESCRICK.COM

ESCRICK PARK
- ESTATE -

