



AHC Property Ltd
Commercial & Residential
Property Specialists

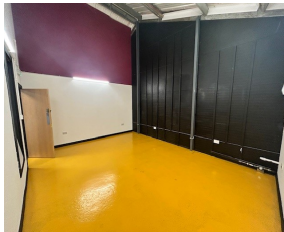
Strasbourg Street, Westwood Industrial Estate, Margate, Kent, Ct9 4JJ
Telephone: 01843 220168 Email: steve@ahcproperty.co.uk

www.ahcproperty.co.uk

Property Particulars

Westwood Business Park, Margate CT9 4JJ

OFFICE AVAILABLE TO RENT ON AN ESTABLISHED BUSINESS PARK



TERM

The property is being offered on a new lease. The lease will be a minimum 12 month

Usage

Would be ideal as:

- Workspace
- Studio
- Storage

Reference:

Aspire, Unit B

RENT

£303.33 per month + VAT

SERVICE CHARGE & INSURANCE DEPOSIT

N/A

ADDITIONS

Access to forklift, scissor lift and container loading ramp available to tenants

BUSINESS RATES

Prospective tenants are advised to make their own enquiries with the local authority.

ENERGY PERFORMANCE RATING

The property has an EPC rating of E.

VAT

VAT will be payable if applicable.

VIEWINGS

Strictly by appointment through AHC Property Ltd on 01843 220168.

Steve Adams

steve@ahcproperty.co.uk

LOCATION

The property is found just off Margate Road on the on the Westwood Business Park, which is situated on the Westwood Industrial Estate. The park comprises a range of different size industrial, Commercial, Office, Storage and Art Studios.

The park is found within a minute of the all the major towns in the area, along with the major Westwood Cross retail shopping park.

DESCRIPTION

Unique Opportunity to take on this space at the heart of Westwood Industrial Estate.

Viewing Highly Recommended

- Workshop Area 4.3m x 5.7m
- 264 sqft
- £303.33 per month + VAT
- Onsite CCTV
- Car Parking Available